



# ITT

Wastewater

## Red Jacket Water Products

RJBB/RJBB2 Battery Backup  
Sump Pumps



### FEATURES

---

- **Packages include:** 12 volt pump, float switch, 10 amp battery charger, check valve, pipe fittings and battery box.
- System requires minimum 105 amp deep cycle marine battery (not included).
- **Features:** Automatic start-up, self-charging design and indicator lights on charger.
- Alarm sounds when pumping and battery won't charge.
- Designed to provide emergency backup service for primary pump in the event of a power outage. Will also operate if main pump can't keep up with inflow.



Red Jacket Water Products is a brand of ITT Corporation.

[www.redjacketwaterproducts.com](http://www.redjacketwaterproducts.com)

*Engineered for life*



# ITT

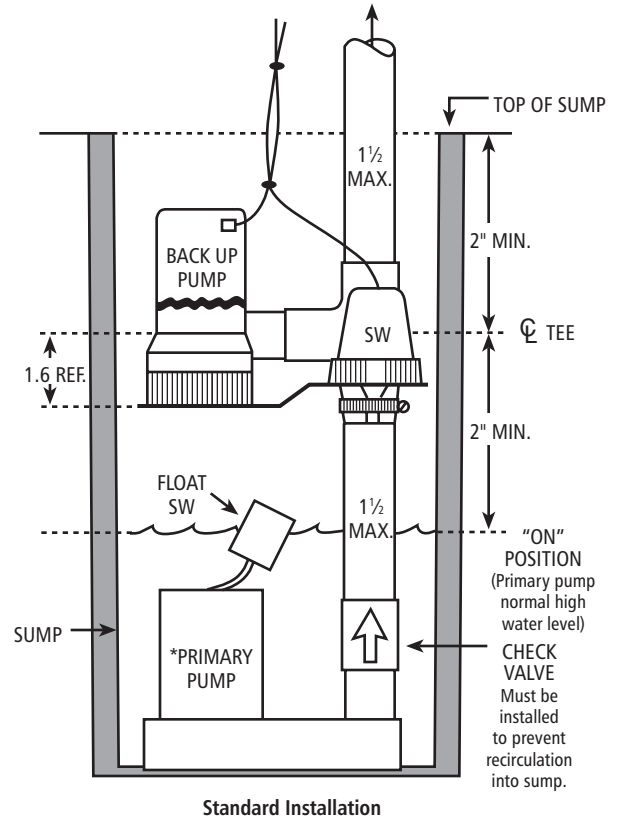
## Wastewater

### RJBB PERFORMANCE CHART

| Discharge Height | GPH  | Battery Life |
|------------------|------|--------------|
| 5'               | 1380 | 9 hrs.       |
| 10'              | 900  | 9 hrs.       |
| 13'              | 480  | 11 hrs.      |

### RJBB2 PERFORMANCE CHART

| Discharge Height | GPH  | Battery Life |
|------------------|------|--------------|
| 5'               | 2250 | 7 hrs.       |
| 10'              | 1500 | 8 hrs.       |
| 13'              | 1000 | 9 hrs.       |



NOTE: \*PRIMARY PUMP NOT INCLUDED.



Red Jacket Water Products is a licensed trademark. The ITT Engineered Blocks Symbol is a registered trademark and tradename of ITT Corporation.

SPECIFICATIONS ARE SUBJECT TO CHANGE WITHOUT NOTICE.

BRJRBB May, 2007  
© 2007 ITT Corporation

*Engineered for life*